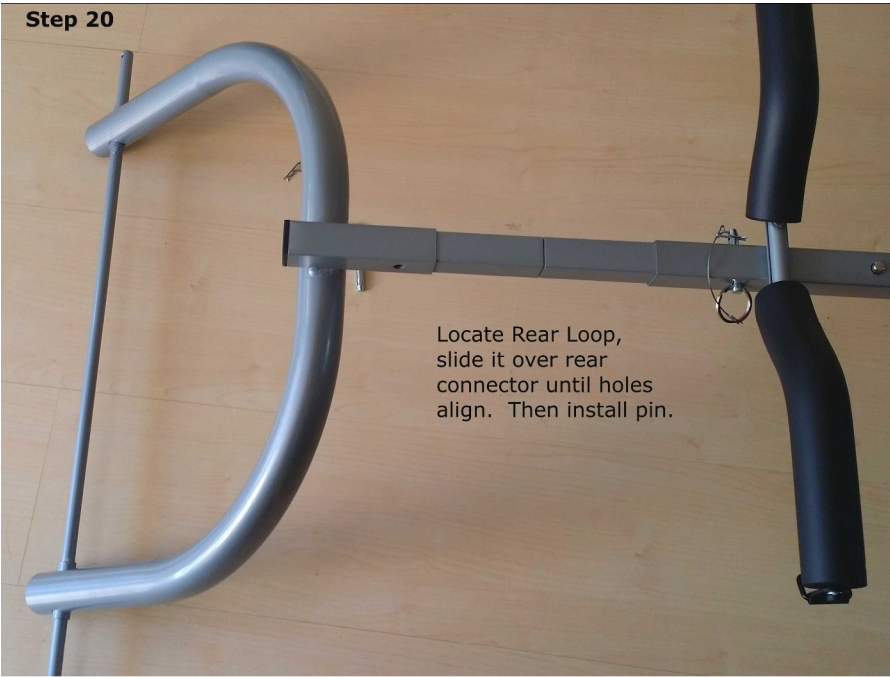


Step 20



Step 22

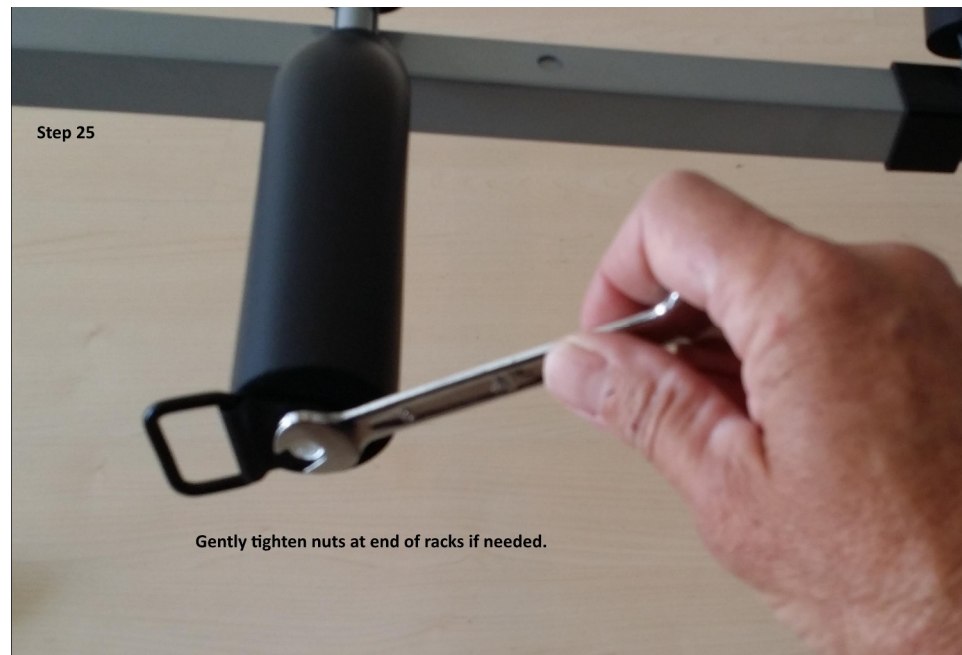


Step 19



Step 21





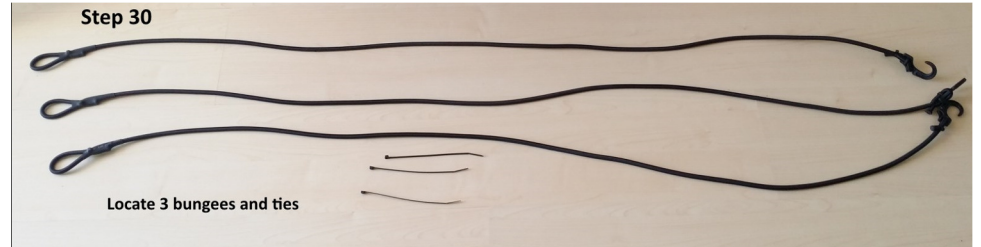
Step 28

Do this at all 4 corners



Step 30

Locate 3 bungees and ties



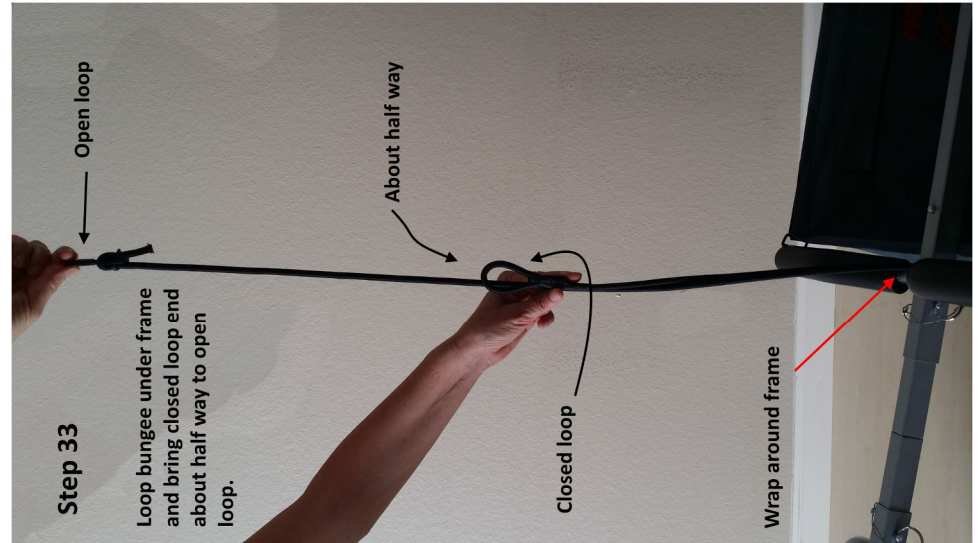
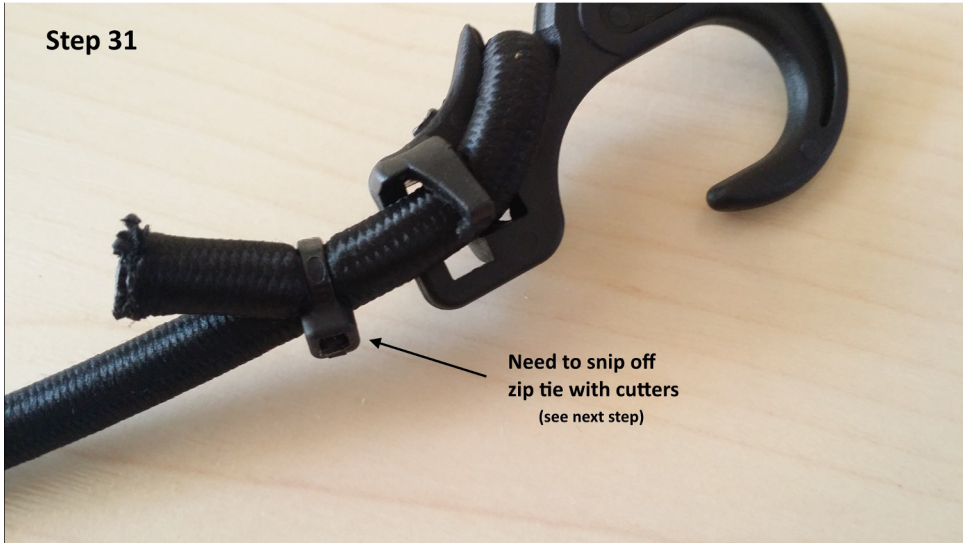
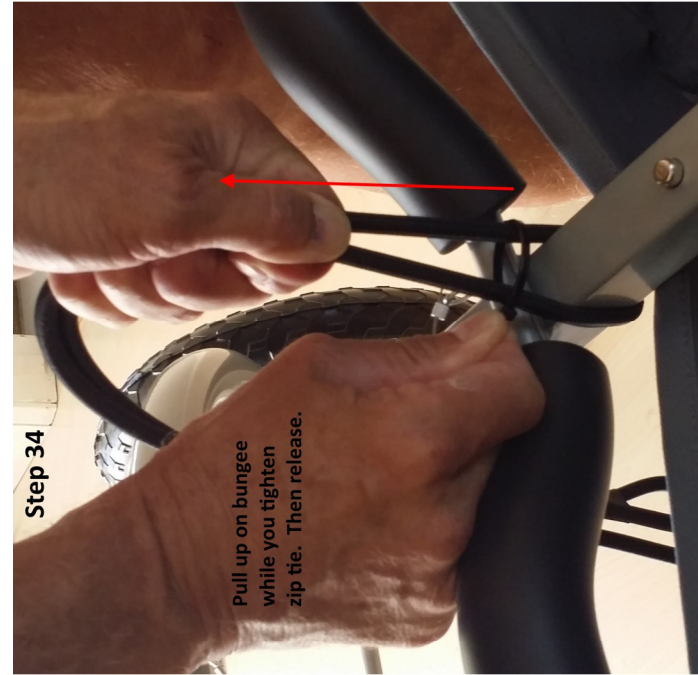
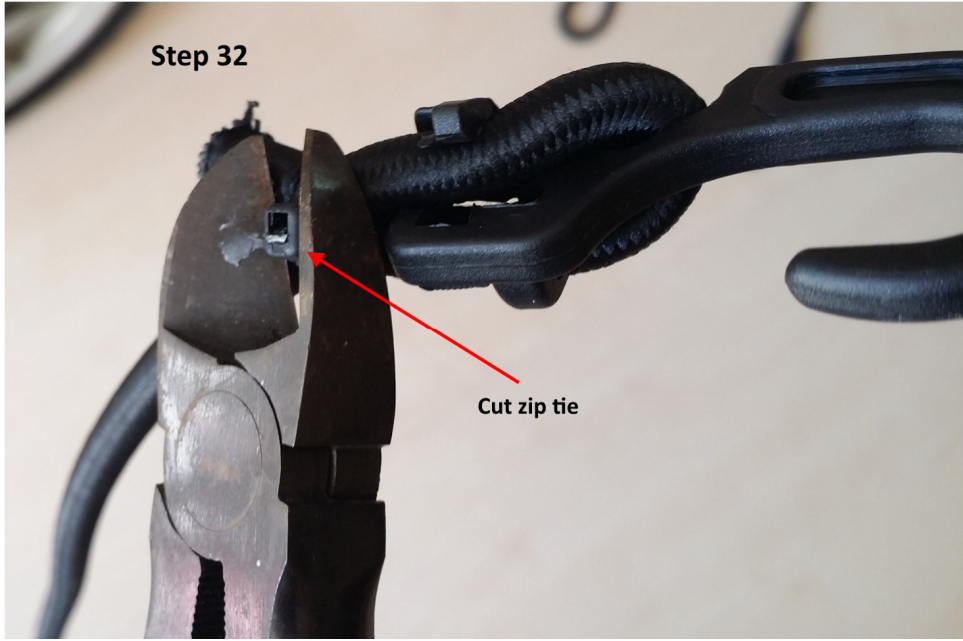
Step 27

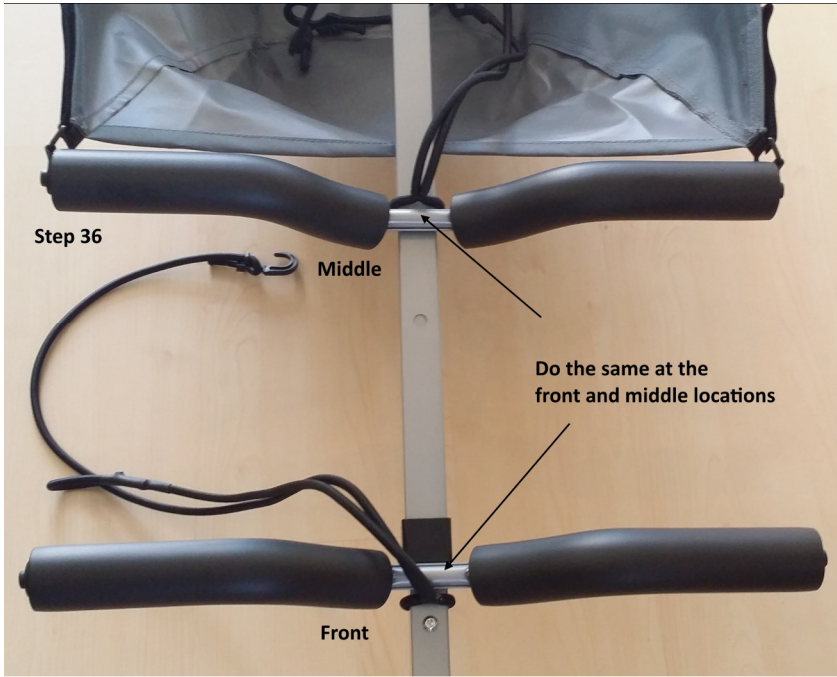


Step 29

You should look like this now

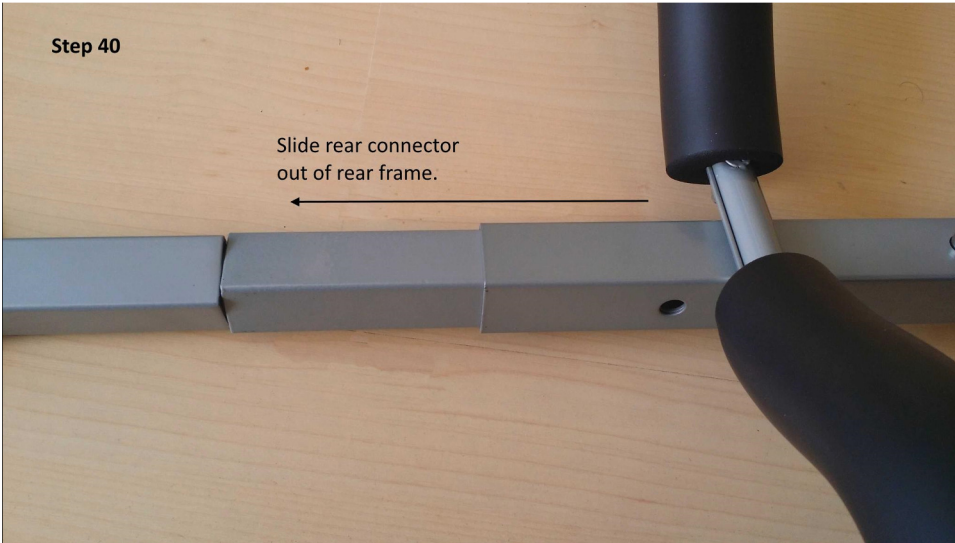






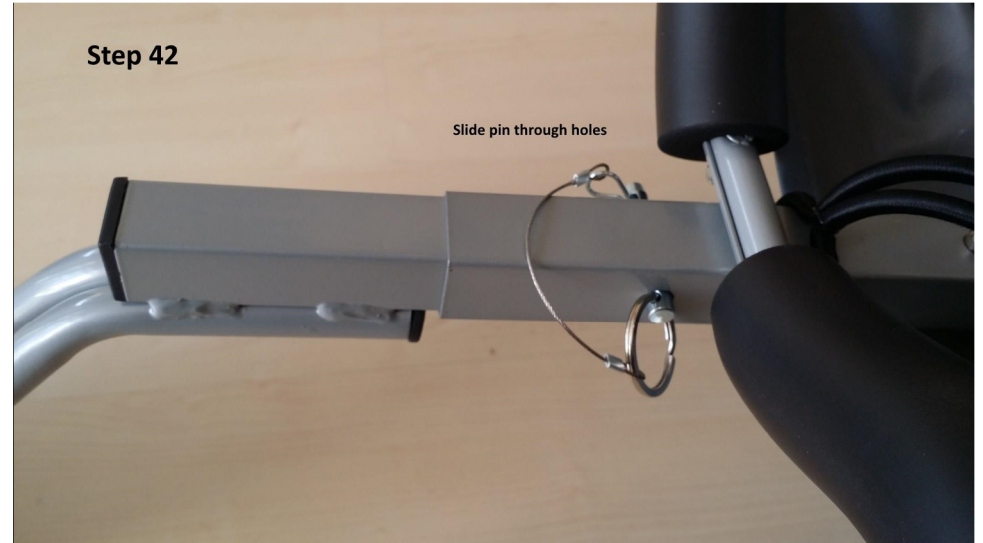
Step 40

Slide rear connector
out of rear frame.



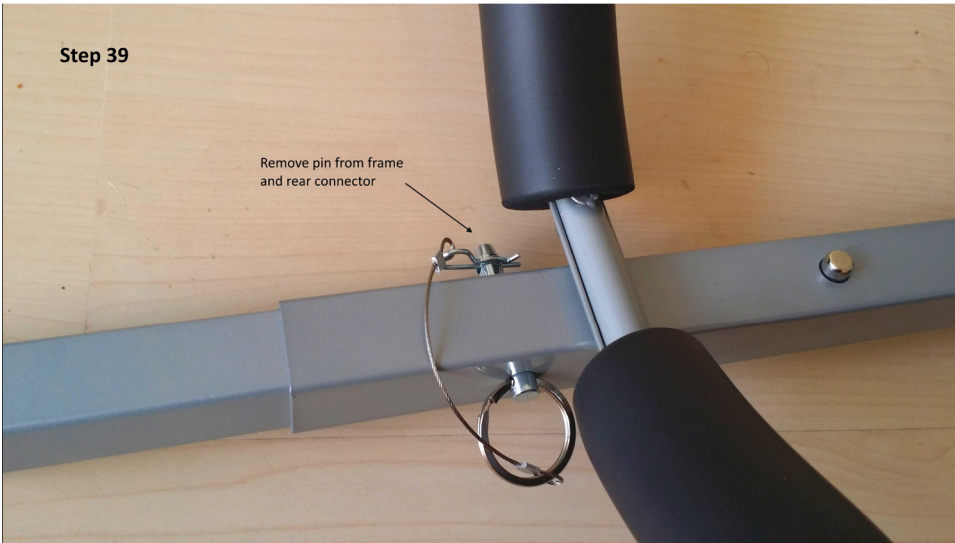
Step 42

Slide pin through holes



Step 39

Remove pin from frame
and rear connector



Step 41

Slide rear fork into rear frame until holes align.

